



# T66CR CLEAN ROOM LIFT

## Standard Features:

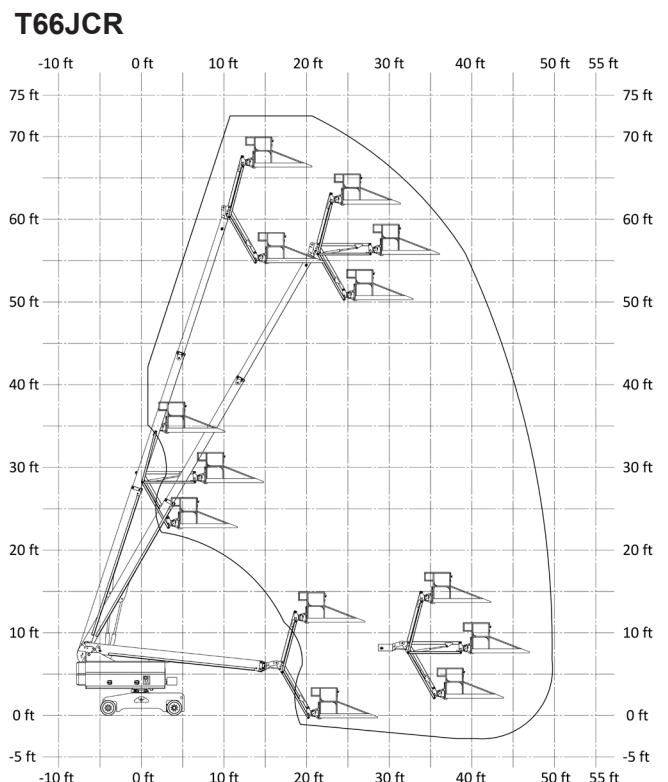
- Clean Room Designed Machine
- DC Power
- Extra-Stiff In-Line Booms
- Precise Electro-Hydraulic Closed-Loop Drive System
- Complete Drip Protection

## Specifications:

T66JCR	US	Metric
Platform Height (Raised)	66 ft 9 in	20.4 m
Platform Capacity (Restricted)	500 lbs	226.8 kg
Stowed Height	8 ft 10 in	2.7 m
Stowed Length	35 ft 10 in	10.9 m
Horizontal Reach	46 ft	14 m
Overall Width	7 ft 7 in	2.31 m
Tail Swing	4 ft 2 in	1.27 m
Ground Clearance	5 ft 2 in	13.2 m
Turret Rotation	360° Continuous	
Platform Rotation	180°	
Hydraulic Tank Capacity	50.7 gal	192 L
Wheel Base	8 ft 4 in	2.54 m
Gross Weight	23,460 lbs	10,641 kg
Travel Speed	1 mph	1 mph

Specifications Subject to Change Without Prior Notice

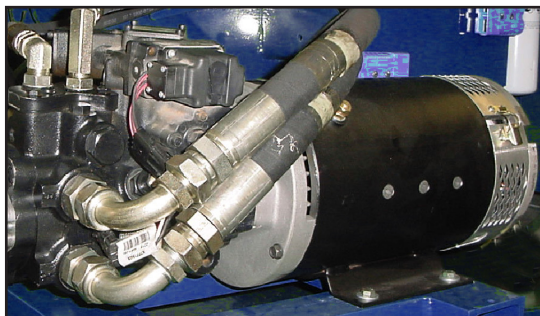
## Range Diagram:



## Technical Features:

### Precise Electro/Hydraulic Closed-Loop Drive

*The best control available today* for electric powered joystick controlled machines. The closed loop hydraulic system powered by a series wound electric motor. Precise and smooth starts and stops, without the excessive coasting associated with conventional traction motor drives.



### Joystick Controls For All Proportional Boom Functions

Smooth joystick control for drive and all proportional boom functions. Two speed switch for allowing accurate slow speed positioning of boom.



### Batteries and Charger

The standard batteries consist of 8 - 6Volt 415Amp-Hour batteries packaged in a forklift removable tray. The 48 Volt battery charger is rated at 50 amps.

### Rigid Non-Marking Tires

Rigid non-marking tires are used instead of conventional foam filled non-marking designs to further provide stiffness and controlled motion at the platform. The motion stiffness is further enhanced by larger wheel spacing (wheelbase and width). This reduces the pitching action and soft feel associated with very short wheelbase machines.

### Clean Modules

Clean control modules for easy wipe-down. Hydraulics in self contained tray to avoid any potential drips

