

A65CR CLEAN ROOM LIFT



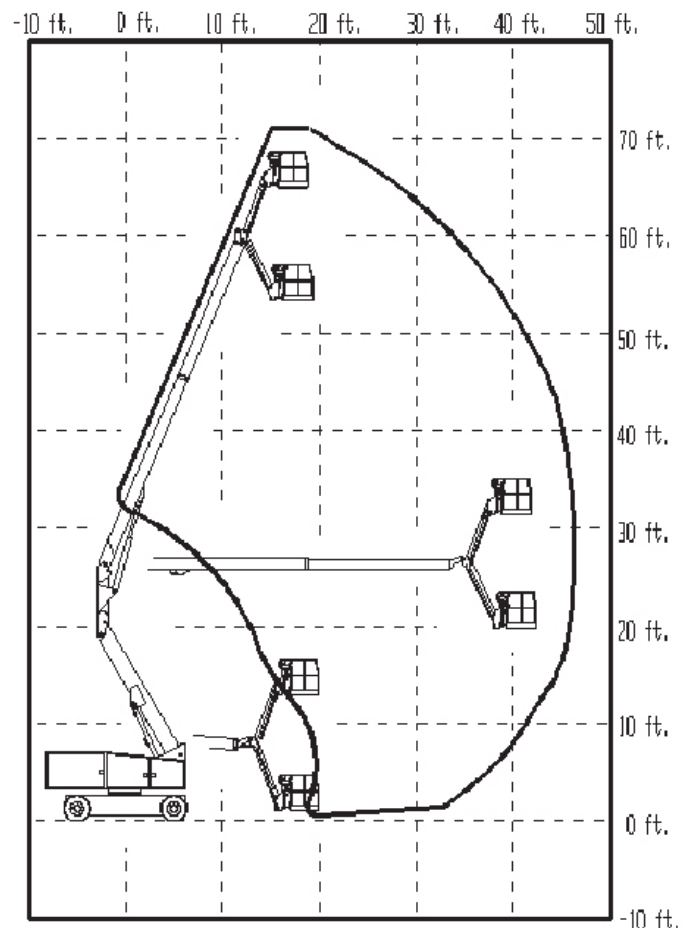
Standard Features:

- Clean Room Designed Machine
- DC Power
- Extra-Stiff In-Line Booms
- Precise Electro-Hydraulic Closed-Loop Drive System
- Complete Drip Protection

Specifications:

A65CR	US	Metric
Working Height	71 ft	21.64 m
Platform Height	65 ft	19.81 m
Platform Capacity	500 lbs	226.8 kg
Platform Size	60 X 36 in	1.5 X .9 m
Stowed Height	10 ft	3.05 m
Stowed Length	29 ft 9 in	9.07 m
Horizontal Reach	47 ft	14.32 m
Overall Width	7 ft 11 in	2.4 m
Tail Swing	4 ft 2 in	1.27 m
Inside Turning Radius	8 ft	2.44 m
Ground Clearance	7 in	.18 m
Turret Rotation	360° cont	360° cont
Platform Rotation	180°	180°
Power Source	48 v	48 v
Wheel Base	10 ft	3.05 m
Gross Weight	23,500 lbs	10,659.4 kg
Travel Speed	2 mph	2 mph
Gradeability	20%	20%

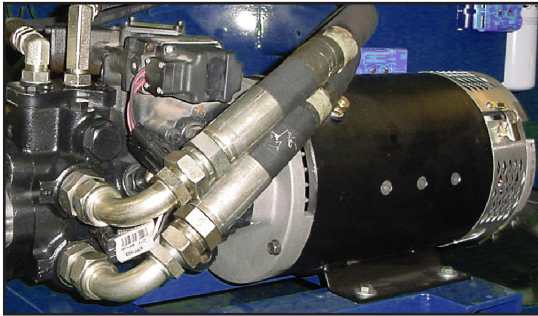
Range Diagram:



Technical Features:

Precise Electro/Hydraulic Closed-Loop Drive

The best control available today for electric powered joystick controlled machines. The closed loop hydraulic system powered by a series wound electric motor. Precise and smooth starts and stops, without the excessive coasting associated with conventional traction motor drives.



Joystick Controls For All Proportional Boom Functions

Smooth joystick control for drive and all proportional boom functions. Two speed switch for allowing accurate slow speed positioning of boom.



Batteries and Charger

The standard batteries consist of 8 - 6Volt 415Amp-Hour batteries packaged in a forklift removable tray. The 48 Volt battery charger is rated at 50 amps.

Rigid Non-Marking Tires

Rigid non-marking tires are used instead of conventional foam filled non-marking designs to further provide stiffness and controlled motion at the platform. The motion stiffness is further enhanced by larger wheel spacing (wheelbase and width). This reduces the pitching action and soft feel associated with very short wheelbase machines.

Clean Modules

Clean control modules for easy wipe-down. Hydraulics in self contained tray to avoid any potential drips

