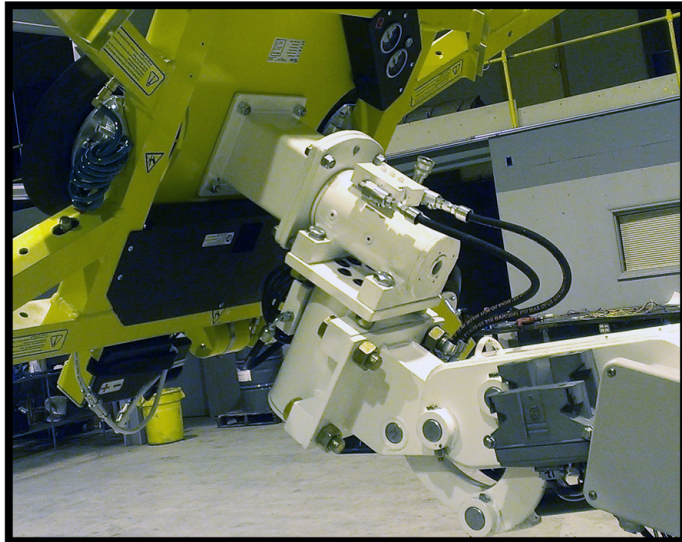


# THE BRANDON

TM

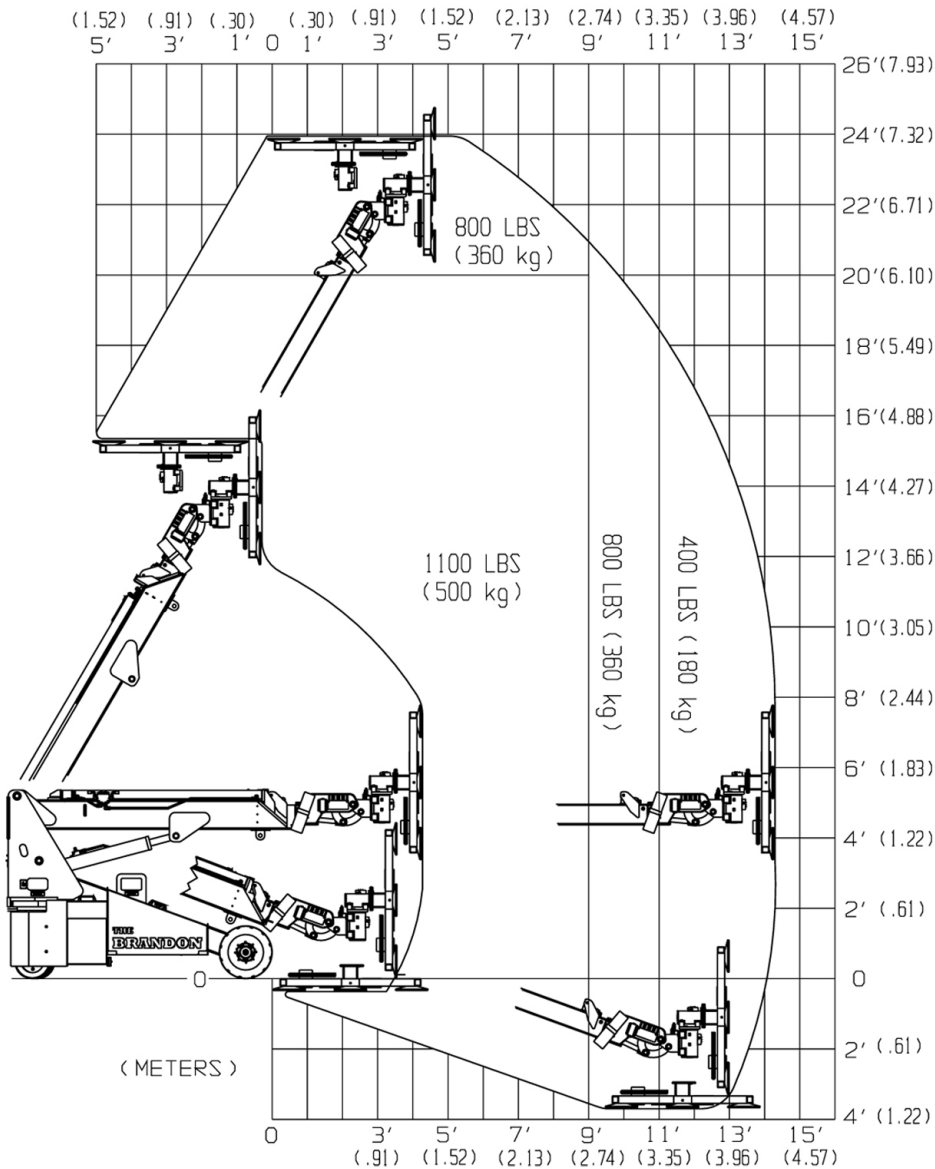
## GLASS-LIFTER



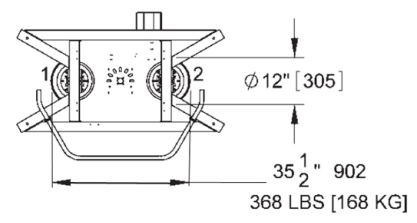
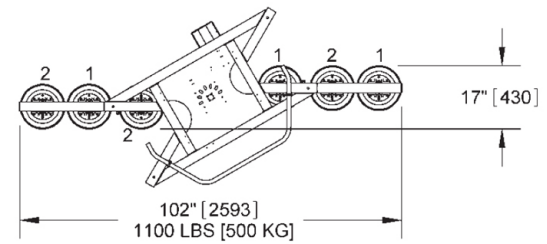
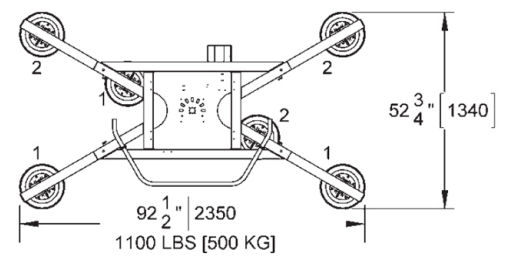
- Model:** Brandon 7.2N Glass Lifter
- Load Capacity:** 1100 lbs (500 kg)
- Power:** 24Volt 7HP Electric Motor.
- Boom:** 3 section boom, 1 fixed and 2 stages telescoping.
- Drive Speed:** 1.75MPH (2.8 km/h)
- Steering:** Rear Wheel +/- 80 degrees
- Drive:** 2 front wheels - hydraulic motor
- Brakes:** 2 spring applied - hydraulic release
- Battery:** 24volt, 435 amp-hour
- Weight:** 5500 lbs (2500 kg)
- Rated Load Limiter:** Displays rated load and actual load. Stops when load limit is reached.
- Charger:** 24 volts - 40 amps, 120V@10amps
- System Display:** Includes Rated Load Limiter, vacuum system status and system information.
- Glass Actuator Control:** Dedicated power unit at tip with proportional motor control for precise feathering of all functions.

### WALKIE HANDLE OR RADIO CONTROLS

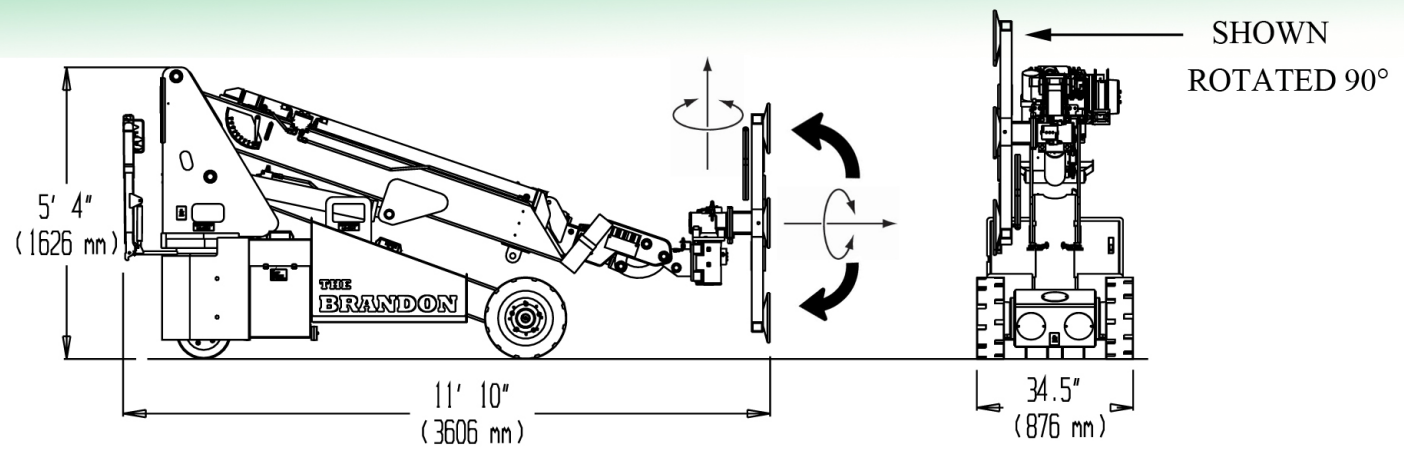




- ✓ Dual Vacuum System
- ✓ 6 - 11" (28mm) Pads
- ✓ 12 Volt System
- ✓ Many Configurations



**Three 180° Rotary Actuators Provide Precise Positioning**



\*\* MULTIPLE PATENTS PENDING \*\*