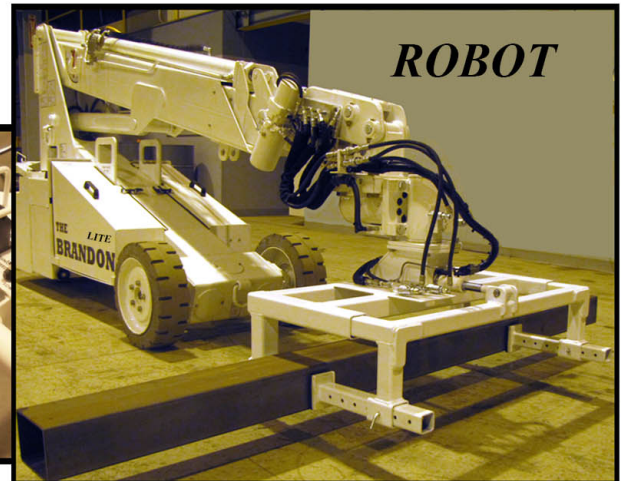
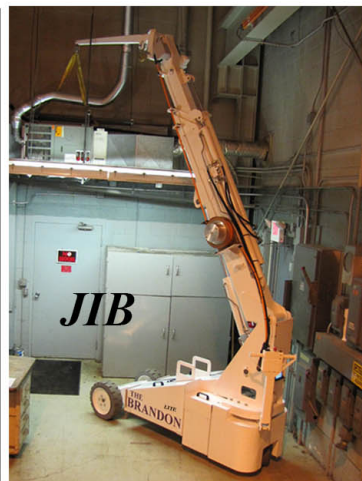
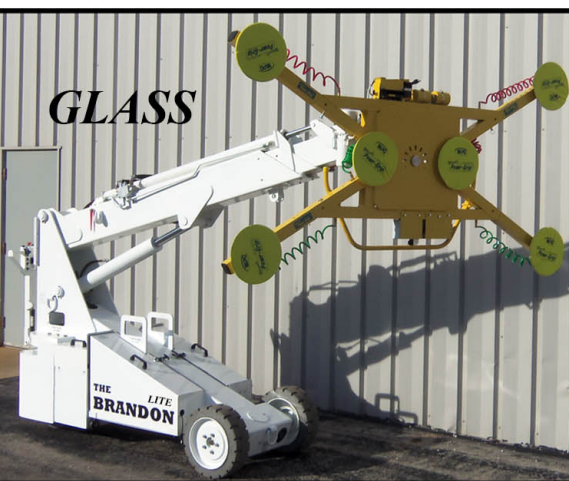
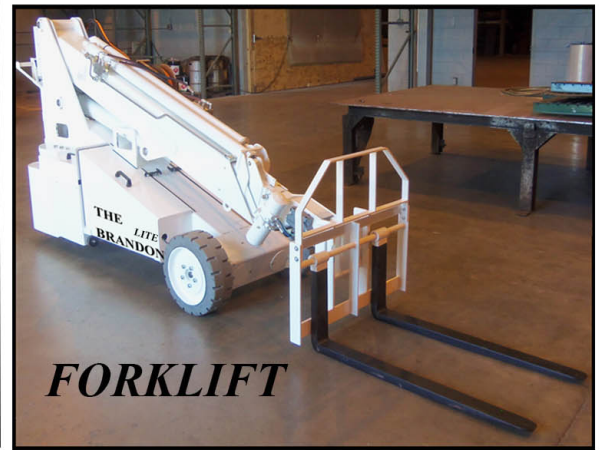


# THE BRANDON LITE

STANDARD TELEHANDLER OR CONFIGURE  
AS NEEDED FOR MULTI-USE LIFTING TOOL





**Hoist Capacity:** 5000 lbs, 2267 kg  
**Winch Capacity:** 2900 lbs, 1315 kg  
**Glazier Capacity:** 1000 lbs, 453 kg  
**Jib Capacity:** 1000 lbs, 453 kg  
**Fork Capacity:** 1950 lbs, 884 kg  
**Reach:** Industry leading reach with below grade capability.

**Battery Power:** 24V 435Amp-Hour  
**Electric Motor:** 6HP Fan Cooled DC  
**Hydraulics:** Gear Pump with Load Sense Dump.  
**Proportional Controls:** Electric Joystick for Proportional Lift and Extend. Includes 2-Speed HI/LOW switch for precise slow speed control.  
**Boom:** Base unit and 2 hydraulically telescoping sections.

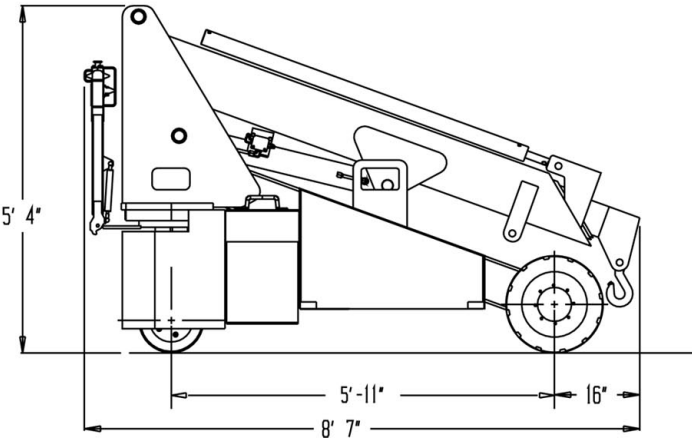
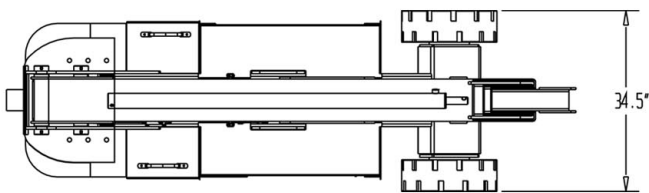
**Steering:** Rear Wheel Walkie Handle  
**Drive:** Rear Wheel Hydraulic Drive with Joystick and Speed Dial to best provide inching control.

**Weight:** 4300 Lbs, 1950 kg  
**Rated Load Limiter:** Displays rated load and actual load. Stops when rated load is reached. Detects which attachment is installed and automatically adjusts load parameters.

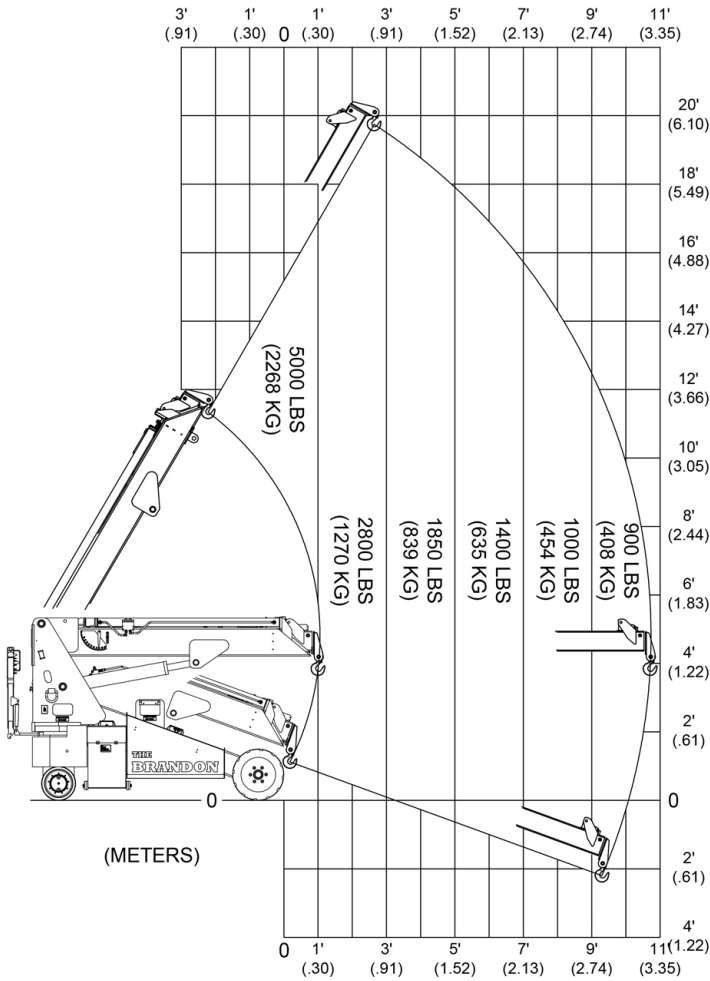
**Progressive Function Control:** Adjusts the maximum drive and lift speeds to limit unsafe operation based on the following:

- Steering Angle (Drive Slow with tight radius)
- Boom Height and Reach
- Lifted Load (Slow when closer to limit)

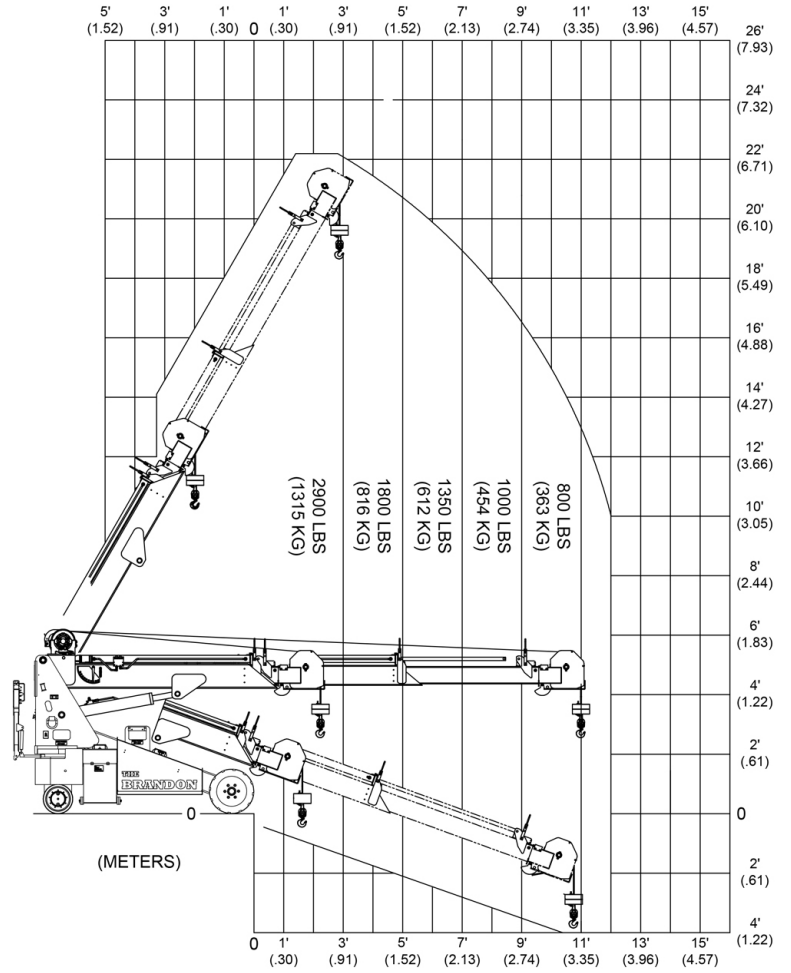
**Charger:** On-board 110V, 10AC Amps, 40DC Amps  
**Removable Battery Box:** For multi-shift operation.



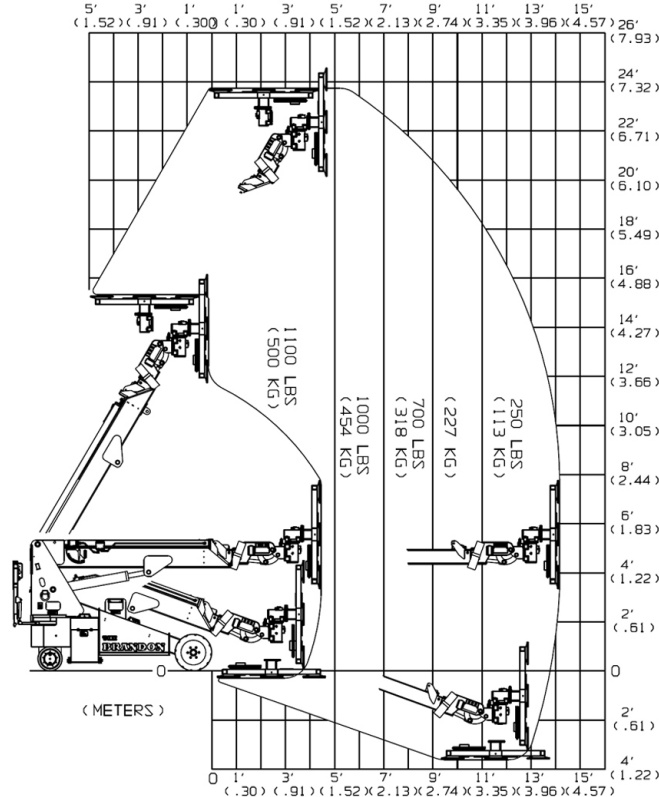
# HOIST LOAD CAPACITY CHART



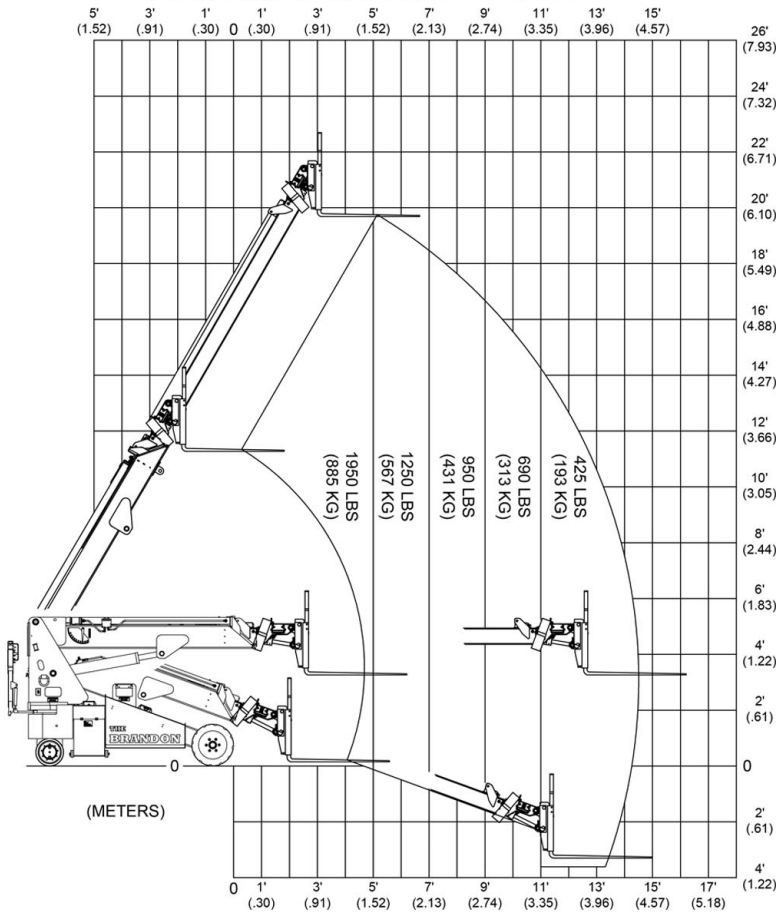
# WINCH LOAD CAPACITY CHART



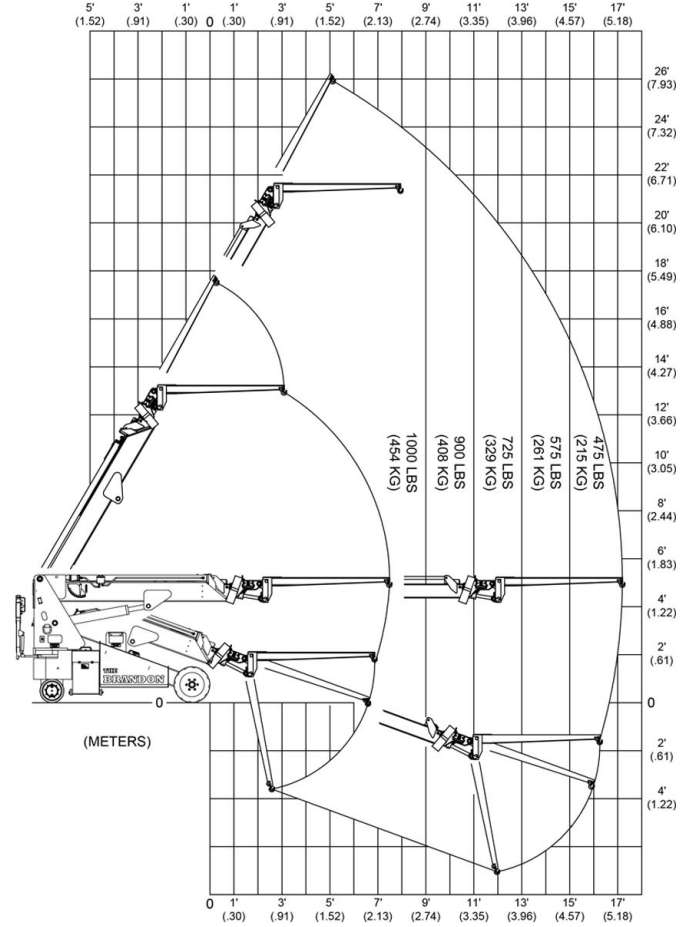
# GLASS LOAD CAPACITY CHART



### FORK LOAD CAPACITY CHART



### JIB LOAD CAPACITY CHART



### ROBOT LOAD CAPACITY CHART

